



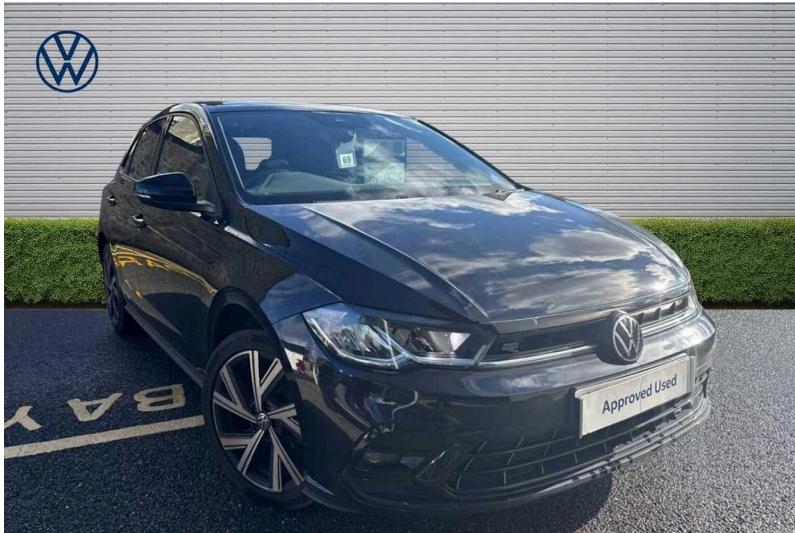
## Volkswagen Polo - R Line

1.0 TSI R-Line Hatchback 5dr Petrol Manual

NOW

**£18,000**

£18,495 *Save: £495*



Mileage  
**16971 mi**

Reg/ID  
**WL24DDJ**

Engine  
**1.0 Petrol**

Transmission  
**Manual**

CO2  
**124 g/km**

Economy  
**54.3 mpg**

Colour  
**Black**

**Scan to View**



### Features & Specification

Adaptive Cruise Control

Cruise Control

Tyre Pressure Monitoring

Isofix

Lane Keeping System

Start/Stop Button

Hill Assist

Spare Wheel

DAB Radio

Multifunction Steering Wheel

Bluetooth

Alloy Wheels

### Driver Convenience

Adaptive cruise control without follow-to-stop and speed limiter, Dynamic road sign display, Bluetooth mobile phone interface, Digital Cockpit Pro with 10.25" Display, service interval display and fuel gauge, Trip computer, Start-stop system with battery regeneration (recuperation - energy recovery during braking)

### Entertainment

2 USB-C ports in the front, 2 USB-C charging sockets on the center console in the rear, DAB Digital radio

### Exterior Features

Pearlescent paint, Electric front windows, Heat insulating darkened glass in side and rear windows, Heat insulating glass windscreen, Rear electric windows, Rear windscreen washer and wiper with interval delay, Body colour bumpers, Body colour door handles, Rear fog light, Third brake light, Power folding adjustable/heated exterior mirrors and front passenger exterior mirror lowering function, Chrome plated radiator grille inserts, window regulator switches

### Packs

Light and sight pack - Polo R-Line/Black Edition

### Safety

Rear shock absorpion, ABS, ESC (Electronic stability control) + EDL (Electronic Differential lock) and ASR (Traction control), Hill hold control, Driver and front passenger airbag with front passenger airbag deactivation, Extended and predictive pedestrian/ cyclist protection, Front curtain and side airbags with center airbag, Manual child lock in rear doors, Single tone horn, Tyre pressure loss indicator, Travel Assist - Lane keeping system and traffic jam assist, Emergency call service, Travel assist including emergency assist, backup horn, and towing protection

### Security

Anti-theft wheel bolts, Electronic engine immobiliser