

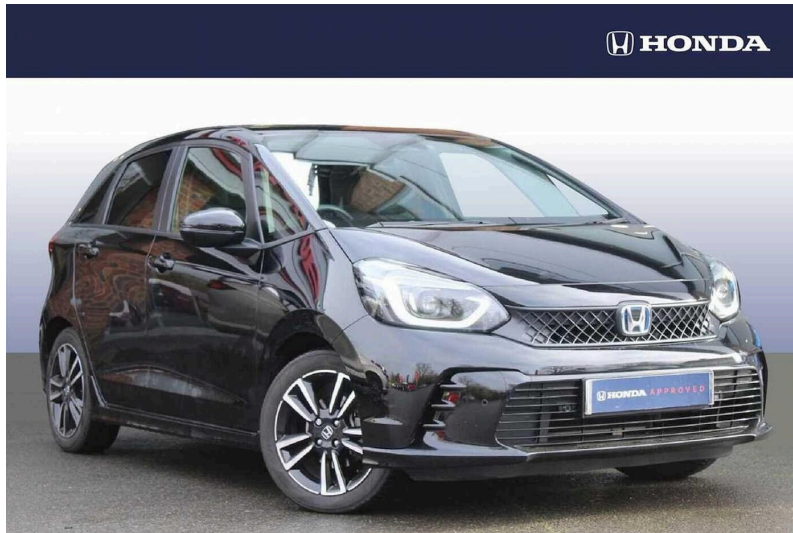
## Honda Jazz - Advance Sport

1.5 H I Mmd Advance Sport Hatchback 5dr Petrol Hybrid Ecvt

NOW

**£21,250**

£21,450 *Save: £200*



Mileage  
**11549 mi**

Reg/ID  
**VG640CT**

Engine  
**1.5 Hybrid**

Transmission  
**Automatic**

CO2  
**105 g/km**

Economy  
**62.8 mpg**

Colour  
**Black**

Scan to View



### Features & Specification



Air Conditioning



Parking Sensors



Sat Nav



Adaptive Cruise Control



Cruise Control



Heated Front Seats



Heated Steering Wheel



Emergency Brake Assistance



Isofix



Touch Screen Display



Premium Sound System



Lane Keeping System

### Driver Convenience

Adaptive cruise control, Electric power steering wheel with variable gear ratio steering, Front and rear parking sensors, Rear view camera, Bluetooth hands free telephone connection, Wireless apple carplay, BLIS (Blind Spot Information System) with Cross Traffic Monitor, Drive mode (Econ, Honda CONNECT with GARMIN Navigation + 9" touchscreen, AM/FM/DAB/Apple Carplay and android auto, Multi-information display

### Entertainment

180w Power audio system with 4 speakers, 2 USB-C connectors rear, 2x USB Front socket (1 data & 1 charge), Remote audio controls on steering wheel

### Exterior Features

Auto wipers, Front and rear electric windows, Privacy glass, Rear wiper, Body colour door handles, Exclusive styling includes front and rear bumper in gloss black finish, Single exhaust tailpipe with finisher, Sport grille, Automatic headlights with on/off timer, High beam assist, LED 3rd brake light, LED daytime running lights, LED Headlights, LED rear lights, Manual headlight levelling, Aspheric door mirrors, Black door mirrors, Electric adjustable door mirrors, Electrically folding door mirrors, Heated door mirrors, Mirrors and windows key fob operation

### Safety

Vehicle stability assist, Anti-lock braking system (ABS), Brake assist function, Collision mitigation braking system, Electronic parking brake with auto hold, Hill start assist, Emergency stop signalling system, Forward collision warning, Lane departure warning system, Lane keep assist system, Traffic sign recognition, Child locks on rear doors, Deflation warning system, Driver knee airbag, Driver SRS airbag (single stage inflation), Driver/Front Passenger airbags, Front and rear side curtain airbag, Front centre airbag, Front side airbags, Passenger SRS airbag cut-off device, Rear side airbags, eCall emergency call system, Isofix points

### Security

Immobiliser, Remote central locking with 2 remote folding keys, Security alarm