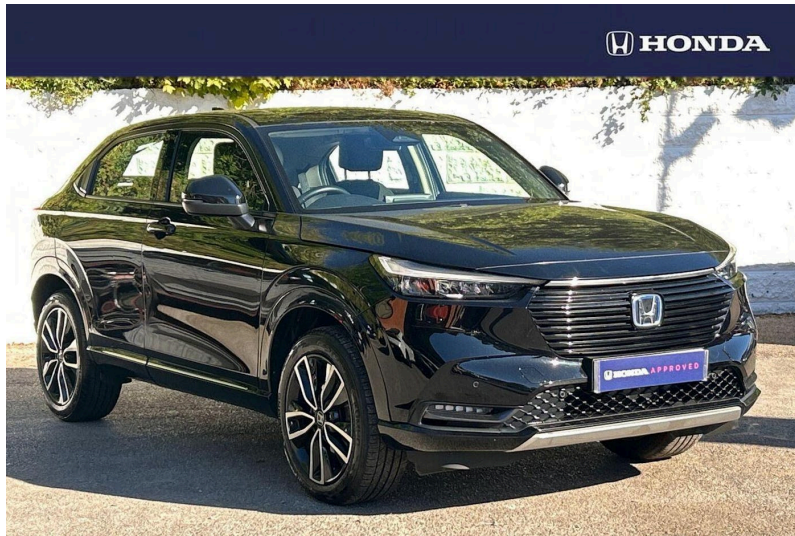


Honda HR-V - Advance

1.5 H I Mmd Advance SUV 5dr Petrol Hybrid CVT

Price

£17,990



Mileage
54434 mi

Reg/ID
RK71BYZ

Engine
1.5 Hybrid

Transmission
Automatic

CO2
122 g/km

Economy
52.3 mpg

Colour
Black

Scan to View



Features & Specification



Driver Convenience

Drive modes select (Eco, Electric power steering, Honda sensing with blind spot information, adaptive cruise control and lane keep assist, Rear parking sensors and rear view camera, Bluetooth hands free telephone connection, Handsfree power tailgate with walkaway close, 7" TFT instrument cluster, BLIS (Blind Spot Information System) with Cross Traffic Monitor, Honda CONNECT with navigation, 9" touchscreen, AM/FM/DAB/Apple Carplay and android auto

Entertainment

2 USB sockets in rear, 2x USB Front socket (1 data & 1 charge), 4 speakers

Exterior Features

Automatic rain sensing wipers, Electric front and rear windows, Front wiper de-icer, Heated front windscreen, Heated rear window, Rear wiper, Variable front intermittent wipers, Windscreen shadeband, Body colour bumpers, Body colour tailgate spoiler, Body coloured door handles, High gloss side window surrounds, Automatic headlights, Headlight washers, High level third brake light, LED daytime running lights, LED front fog lights, LED headlamps, Manual headlight levelling, Electrically adjustable and heated door mirrors, Retractable/reverse auto tilt door mirrors, Mirrors and windows key fob operation

Safety

Vehicle stability assist, ABS+EBD+Brake assist, Collision mitigation braking system, Collision mitigation throttle control, Electronic parking brake, Hill start assist, Emergency stop signalling system, Forward collision warning, Traffic sign recognition, Dual front SRS airbags, Electric child locks, Front and rear curtain airbags, Front and rear safety belts with Emergency Locking Retractor, Front side airbags, Low speed safety system, Passenger SRS airbag cut-off device, eCall emergency system, Isofix points

Security

Immobiliser, Keyless smart entry with push button start, Remote central locking with 2 remote folding keys, Security alarm