

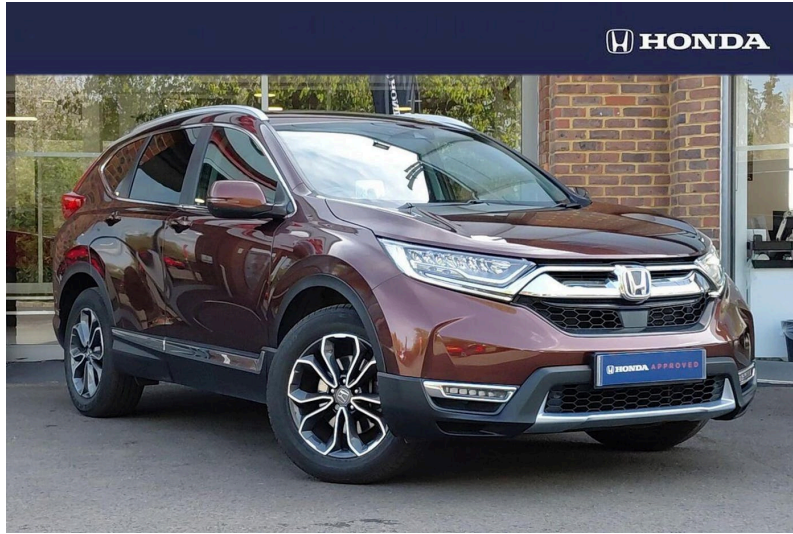
Honda CR-V - Ex

2.0 H I Mmd Ex SUV 5dr Petrol Hybrid Ecvt 4wd

NOW

£23,750

£24,000 *Save: £250*



Mileage
44662 mi

Reg/ID
RX22WCO

Engine
2.0 Hybrid

Transmission
Automatic

CO2
163 g/km

Economy
39.2 mpg

Colour
Brown

Scan to View



Features & Specification



Driver Convenience

Adaptive cruise control, Electric power steering, Front parking sensors, Rear parking sensors, Rear view camera, Bluetooth hands free telephone connection, Wireless charging, Steering wheel mounted controls, Hands free tailgate, BLIS (Blind Spot Information System) with dual power heated blind spot mirrors, Head up Display, Honda CONNECT with GARMIN Navigation + 7" touchscreen, Apple CarPlay, Android Auto, Intelligent multi info display, Instrument panel with garnish wood film

Entertainment

2 USB sockets in rear, 2x USB sockets in front, 9 speakers, DAB Digital radio, Dashboard centre speaker, DAB radio

Exterior Features

Electric front windows/one touch facility, Electric rear windows + one touch facility, Front windscreen de-icer, Rain sensor, Rear privacy glass, Rear wiper, Body colour bumpers, Body colour door handles, Panoramic opening glass sunroof, Roof rails, Automatic headlights with dusk sensor, High beam assist, LED daytime running lights, LED front fog lights, LED Headlights, LED rear lights, Third brake light, Aspheric door mirrors, Door mirrors tilt when reversing, Electrically adjustable and heated door mirrors, Electrically retractable door mirrors

Safety

Vehicle stability assist, ABS/EBD, Brake assist function, Collision mitigation braking system, Electronic parking brake with auto hold, Hill start assist, Emergency stop signalling system, Forward collision warning, Lane departure warning system, Lane keep assist system, Traffic sign recognition, Driver airbag, Front and rear curtain airbags, Front side airbags, Manual child lock in rear doors, Passenger airbag deactivate switch

Security

Immobiliser, Security alarm, Ultrasonic security sensor